

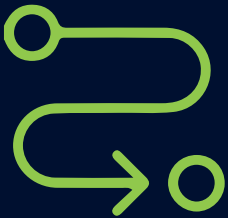
Survival in the digital battlefield

Multi-channel Anti-Jam GPS from the antenna experts

An effective and reliable jam resistant system is an absolute essential for freedom of action and operational advantage. Chelton has been developing battle-proven anti-jam GNSS solutions for high performance fixed and rotary wing platforms for over twenty years. We pride ourselves in providing an effective and reliable Assured PNT solution comprised of antennas, processor, and software.

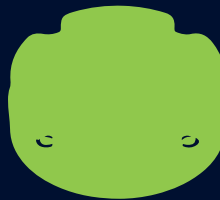
To determine the best defence, Chelton's solution analyses the frequency, modulation, bandwidth and power of the interference in order to combat it with either excision, nulling or beamforming.

Our portfolio includes 4 and 8 channel Digital Antenna Control Units with complementary Controlled Reception Pattern Antennas.



End-to-End Solution

We provide a complete end-to-end solution: antenna, processor, and software, all individually tailored to the needs of each platform.



More than a 'black box' solution

We don't just provide 'black box only' solutions; our systems work in harmony with the antenna. This unique capability results in a system with superior performance when operating in a benign environment.



Digital Signal Processing

Chelton's multi-channel Digital Antenna Control Units offer broadband and narrowband interference protection through excision, nulling or digital beamforming.



Advanced Modelling

Chelton's advanced modelling techniques ascertain your platform's RF radiation characteristics, and determine the optimal placement for GNSS antennas to deliver superior performance.



Intelligent System

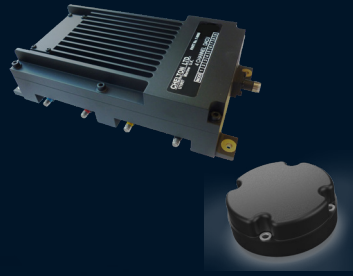
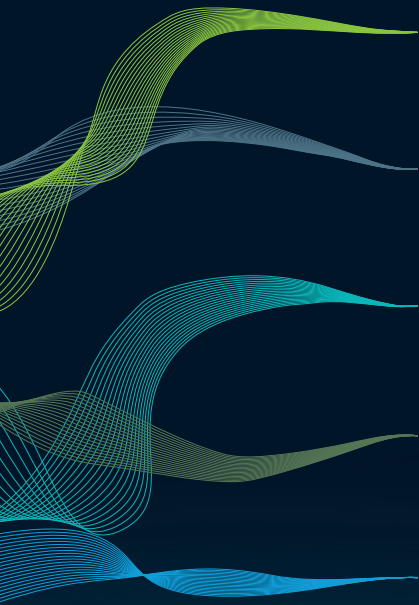
Our system intelligently selects the appropriate defence against incoming interference, and shares threat intelligence with on-board mission systems.



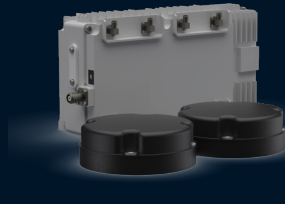
Platform Tailored

When it comes to fitting your system, each install is bespoke, and tailor-made to your platform's needs and calibrated to your exacting requirements.

CHELTON



**4-Channel Nulling
Anti-Jam System**



**8-Channel Nulling
Anti-Jam System**



**8-Channel
Beamforming
Anti-Jam System**

Part Numbers	DACU: 7-6005 CRPA: 20-7009	DACU: 7-6008 CRPA: 20-7009 x 2	DACU: 7-6010 CRPA: 20-8000
Number of channels	4	8	8
Protection	Excision + STAP (nulling)	Excision + STAP (nulling) Direction Finding	STAP (beamforming)
Protected bands	GPS L1 and/or L2 C/A, P(Y) and M-Code	GPS L1 and/or L2 C/A, P(Y) and M-Code	GPS L1 & L2 C/A and P(Y)
Interfaces	RF output, RS422 and USB	RF output, RS422 and USB	RF output, SERDES, RS422 and USB
Power consumption	23W @28VDC	42W@28VDC	45W@28VDC
DACU Weight	1.6kg max	2.06kg max	2.25kg max
DACU Dimensions	231 (L) x 125 (W) x 60 (H) mm	257 (L) x 97 (W) x 131 (H) mm	256 (L) x 90 (W) x 128 (H) mm
CRPA Weight	0.5kg max	2 x 0.5kg = 1kg max	2.3kg max
CRPA Dimensions	114.3 (Ø) x 43.5 (H) mm	2 x 114.3 (Ø) x 43.5 (H) mm	264.2 (L) x 269.2 (W) x 35.8 (H) mm