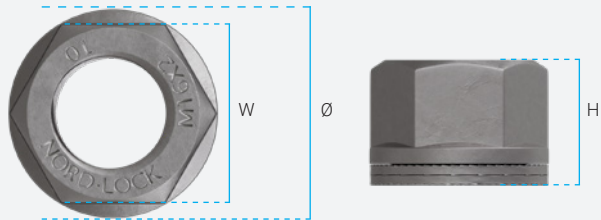


TECHNICAL SPECIFICATIONS

Surface coating	Zinc Nickel plating according to ISO 4042
Corrosion resistance	600 hours according ISO 9227
Lubrication	Dry film lubricant
Property class	Class 10



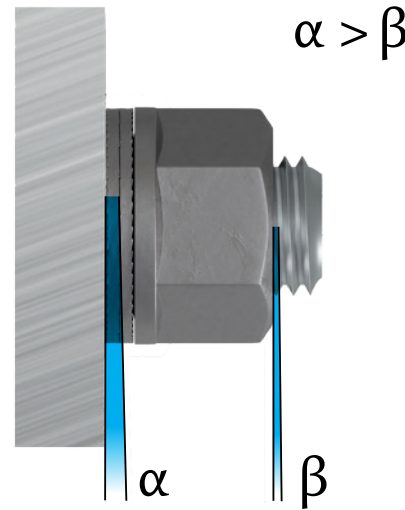
Designation	Thread	Width across flats [W]	Outer diameter [Ø]	Height [H]
NLCN6	M6x1.0	10.0 mm	12.5 +0.6 mm -0.6	8.7 +0 mm -0.8
NLCN8	M8x1.25	13.0 mm	15.9 +0.6 mm -0.6	10.7 +0 mm -0.9
NLCN10	M10x1.5	15.0 mm	18.1 +0.6 mm -0.6	13.4 +0 mm -0.9
NLCN12	M12x1.75	18.0 mm	21.5 +0.6 mm -0.6	15.4 +0 mm -0.9
NLCN16	M16x2.0	24.0 mm	28.2 +0.6 mm -0.6	19.4 +0 mm -1.2

NORD-LOCK ORIGINAL WASHERS

Additionally, Nord-Lock original washers have been used for many years to secure critical applications exposed to extreme vibrations and dynamic loads.



HOW IT WORKS



Each combi nut combines a nut with a pair of captivated Nord-Lock Original washers. The washers have cam faces on one side and serrations on the other.

As the cam angle “α” is greater than the thread pitch “β”, a wedge-effect is created, allowing movement only across the cam faces. Any rotation of the combi nut is blocked by the wedge effect of the cams.

The Nord-Lock Combi Nuts are tested according to DIN 25201.

NORD-LOCK
GROUP

NORD-LOCK® COMBI NUTS

FASTER AND SAFER ASSEMBLY



Nord-Lock International AB
T: +46 640 681 180
E: info@nord-lock.com
www.nord-lock.com

NORD-LOCK
GROUP

00858_NL_V02

© 2024 Nord-Lock Group. Nord-Lock®, Superbolt®, Boltight® and Expander® are trademarks owned by different companies within the Nord-Lock Group. All rights reserved.

NORD-LOCK®

GET MORE DONE

UNLOCK THE FULL POTENTIAL OF SERIAL ASSEMBLY

NLCN
M6x1.0



NLCN
M8x1.25



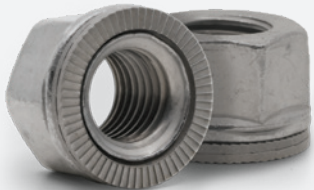
NLCN
M10x1.5



NLCN
M12x1.75



NLCN
M16x2.0



APPLICATIONS

Combi nuts are ideal when a lack of accessibility and loose parts make assembling and maintenance difficult.

SERIAL PRODUCTION



MACHINE BUILDING



POWERGEN RENEWABLE



POWERGEN NON-RENEWABLE



TRANSPORTATION



RAILWAY



NORD-LOCK COMBI NUTS

The combi nuts use Nord-Lock wedge-locking technology to secure bolted connections by maintaining a high clamp force, even under severe operating conditions. A tightened Nord-Lock combi nut cannot loosen by itself.

By combining a nut with a pair of captivated Nord-Lock original washers, the combi nut simplifies assembly, reduces the risk of errors, and optimizes efficiency. The advantages of the combi nut will streamline production for any manufacturer using serial assembly.

ADVANTAGES

- Enables fast assembly.
- Reduces the risk of incorrect assembly.
- Mitigate the risk of parts coming loose.
- Easier to disassemble and reassemble during maintenance.
- Less time is required to maintain production.
- Cost savings through improved productivity.